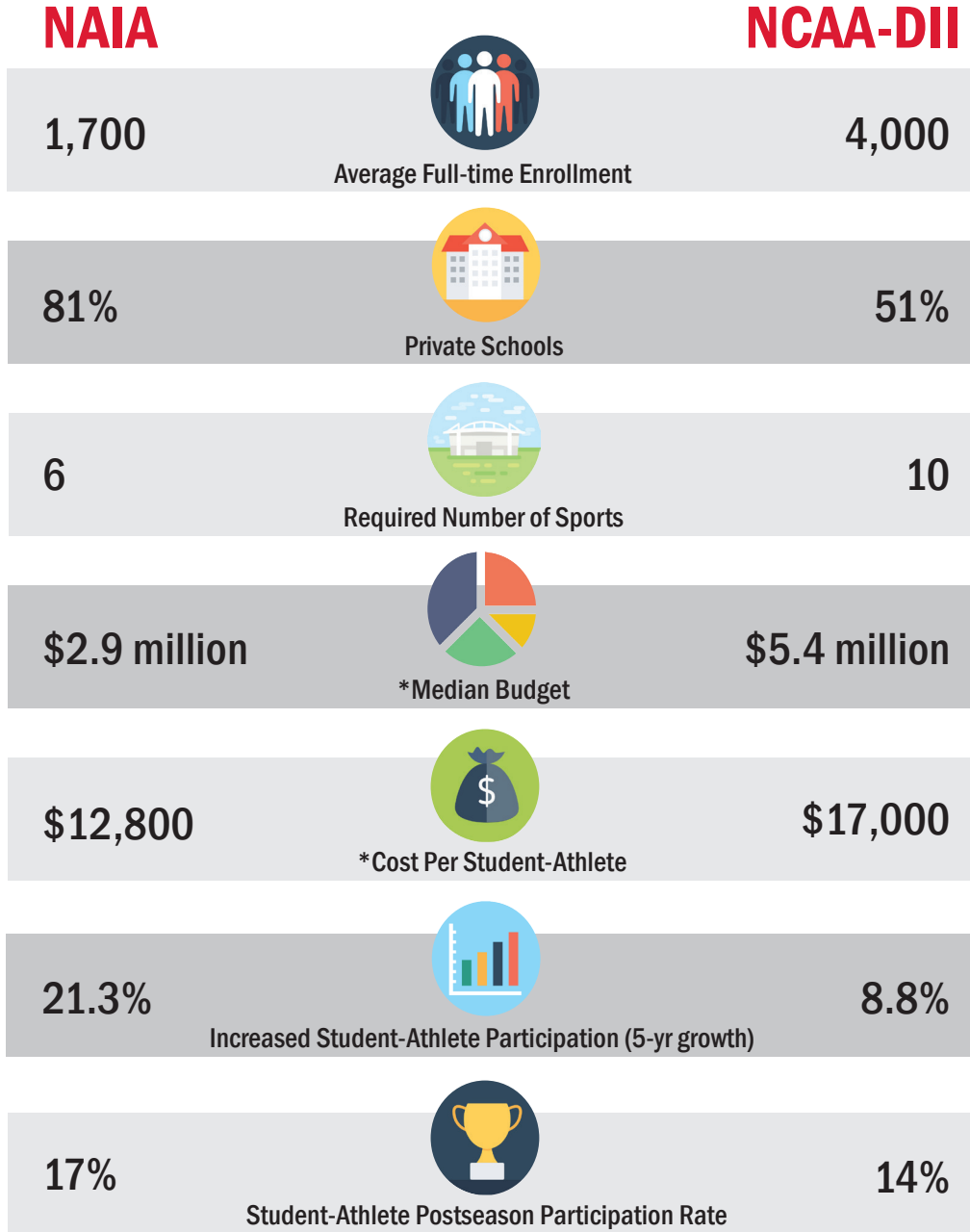


NAIA VS DII












**including athletic aid*

Data represents a five year span and sources include: EADA 2014-15; IPED 2014, NAIAHelp Database, NCAA Facts & Figures, D-II and D-III.

NAIA VS. DIII



NAIA		NCAA-DIII
1,700	 Average Full-time Enrollment	2,600
81%	 Private Schools	81%
6	 Required Number of Sports	10/12
\$1.7 million	 *Average Operating Budget	\$2.7 million
\$6,800	 *Operating Cost Per Student-Athlete	\$9,700
21.3%	 Increased Student-Athlete Participation (5-year growth)	6.4%
17%	 Student-Athlete Postseason Participation Rate	10%
yes	 Full Disclosure Financial Aid	no
yes	 National Eligibility Standards	no

**not including financial aid*